

# SLIP RINGS

A **slip ring** is an electromechanical device that facilitates the transmission of electrical power and signals from a static to a moving part.

Slip ring is very important component that can solve the 360° continuous rotating and get electricity to a continuously rotating part of assembly, rotate without limits.

Slip rings can enhance the mechanical performance of a machine, streamline system functionality, and eradicate damage-prone wires hanging from rotating joints.

They function by making continuous electrical connections from stationary systems to rotating systems.

Our products guarantee a reliable operation of the whole equipment system.

## APPLICATIONS

**Slip rings** are used in electromechanical device including rotating table, surveillance systems like radars, medical machines like microscope and support arm lamps, renewable energy sources like wind turbines, automation equipment.

They are used in almost all electromechanical machines which call for unrestricted, discontinuous or continuous spinning while conducting power and signals.



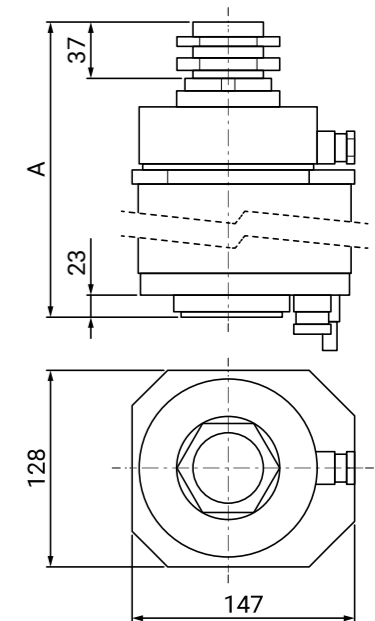
## FEATURES

**Slip rings** are used to transfer electrical signal and power energy between stator and a rotor or vice versa.

They are comprised of 3 or more metal contacts, mounted on the steel shaft. The contact brushes are all replaceable and are in copper.

- **OPERATING TIME:** The operating life of a slip ring depends on the rotation speed and the dynamic stability.
- **CURRENT RATING:** Capacity can be increasing by connecting in series or parallel two or more slip rings.
- **SPEED OPERATION:** Max rotation speed 20 turns 1'.

RINGS NR.	CODE	A (HEIGHT)
3	30402091	180
4	30402092	195
5	30402093	210
6	30402094	225
7	30402095	240
8	30402096	255
9	30402097	270
10	30402098	285
11	30402099	300
12	30402100	315
13	30402101	330
14	30402102	345
15	30402103	360



## TECHNICAL DATA

- Rated insulation voltage  $U_i$  690V.
- Rated operating voltage  $U_e$  500Vac.
- Rated operating current 20A.
- Intermittent working 30A.
- IP51 close frame version with protection rated IEC/EN60529.
- Modularity: from 3 up to 15 rings  $\varnothing 80$  mm.
- Copper brushes.
- Shaft  $\varnothing 42$  mm.
- PVC  $\varnothing 147$  mm housing and terminals cover.
- Ambient temperature: +60°C/-30°C.